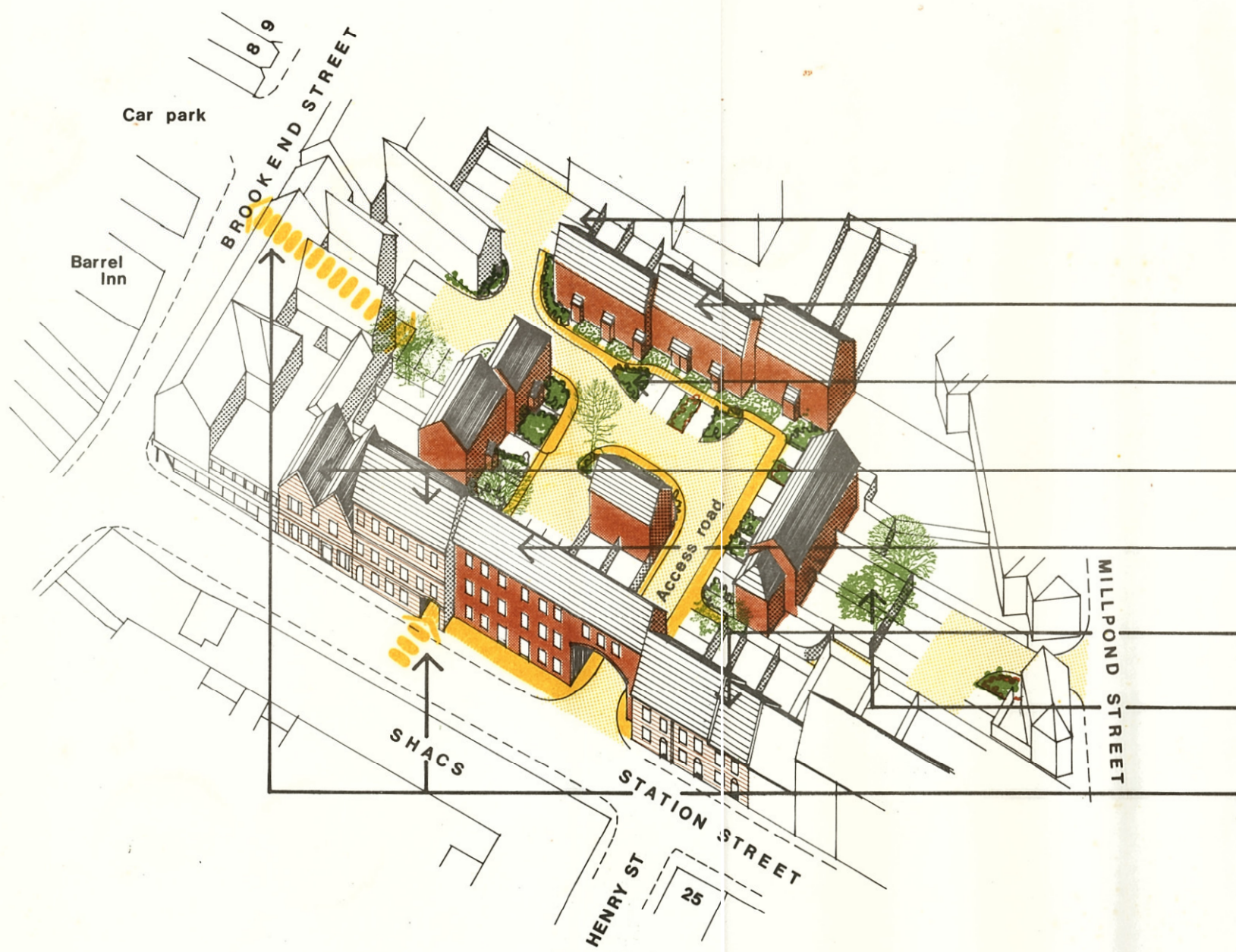


**APPENDIX I**  
**Notional scheme -**  
**ALTON COURT**  
**BREWERY SITE**



- Residents parking
- New housing - preferably one and two bedroom units
- Landscaping areas
- Buildings to be retained for conversion to flats
- New 3 storey block of flats with access way under
- Cottages to be retained and improved if necessary
- Private gardens
- Pedestrian access