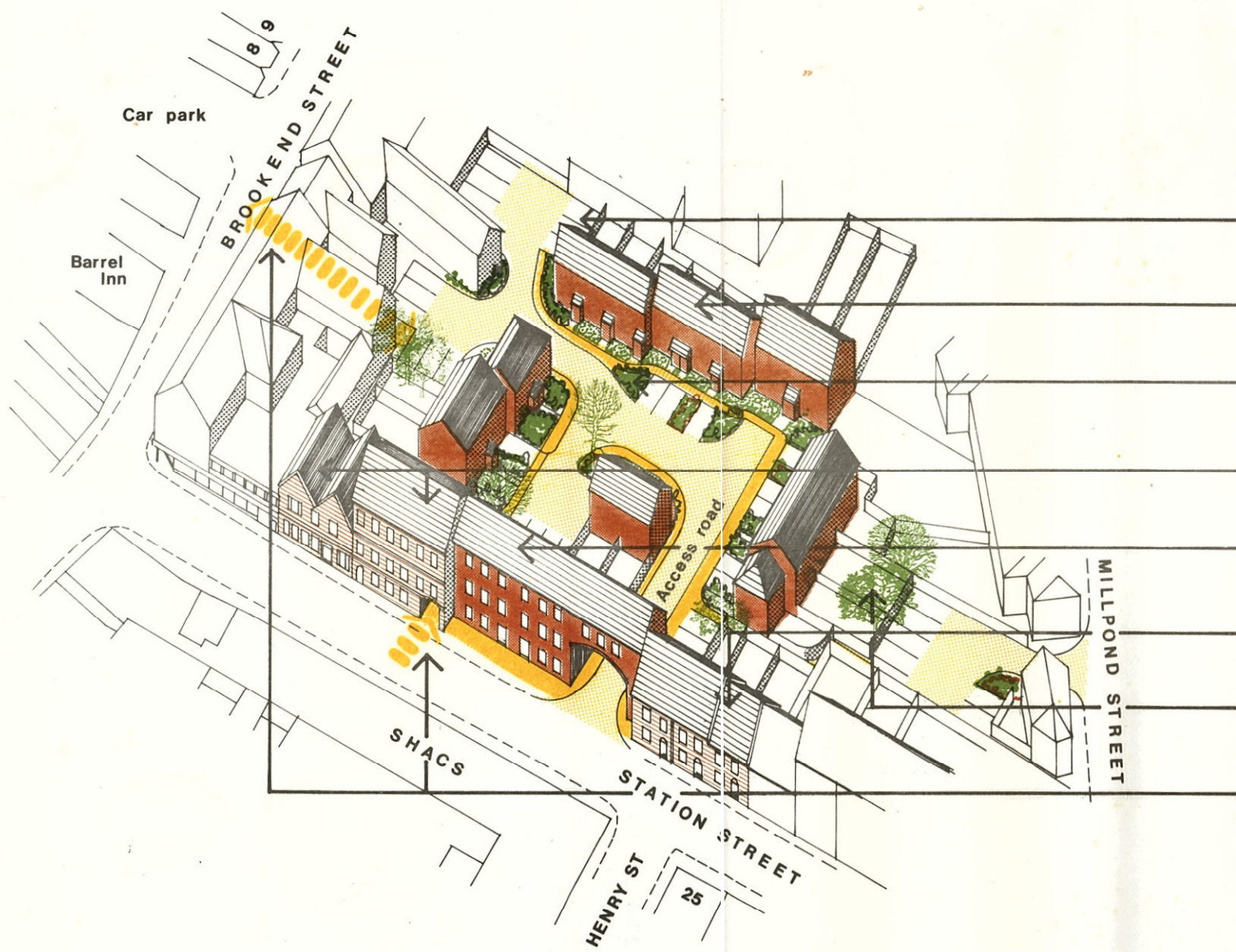


APPENDIX I
Notional scheme -
ALTON COURT
BREWERY SITE



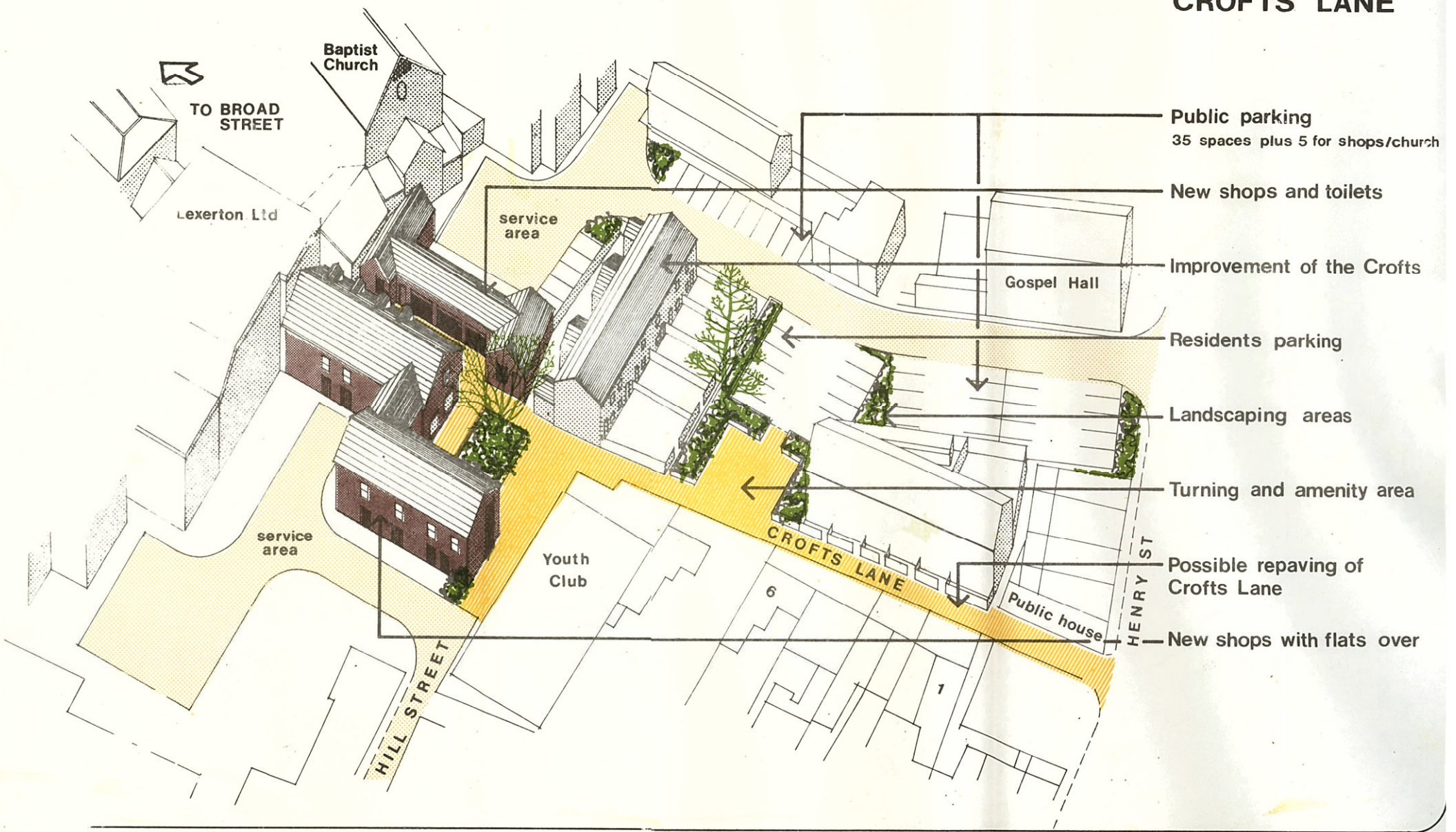
- Residents parking
- New housing - preferably one and two bedroom units
- Landscaping areas
- Buildings to be retained for conversion to flats
- New 3 storey block of flats with access way under
- Cottages to be retained and improved if necessary
- Private gardens
- Pedestrian access

APPENDIX I
Notional scheme-
MILLPOND AREA



- New shrub and tree planting
- Improved layout and surfacing of car park
- Existing trees in car park and foot of embankment retained
- Existing untidy fences removed where possible
- New footpath link to proposed industrial estate
- Possible repaving with more attractive materials
- Improvement of garden adjoining the Mill

APPENDIX I
**Notional scheme -
 CROFTS LANE**



- Public parking
35 spaces plus 5 for shops/church
- New shops and toilets
- Improvement of the Crofts
- Residents parking
- Landscaping areas
- Turning and amenity area
- Possible repaving of Crofts Lane
- New shops with flats over